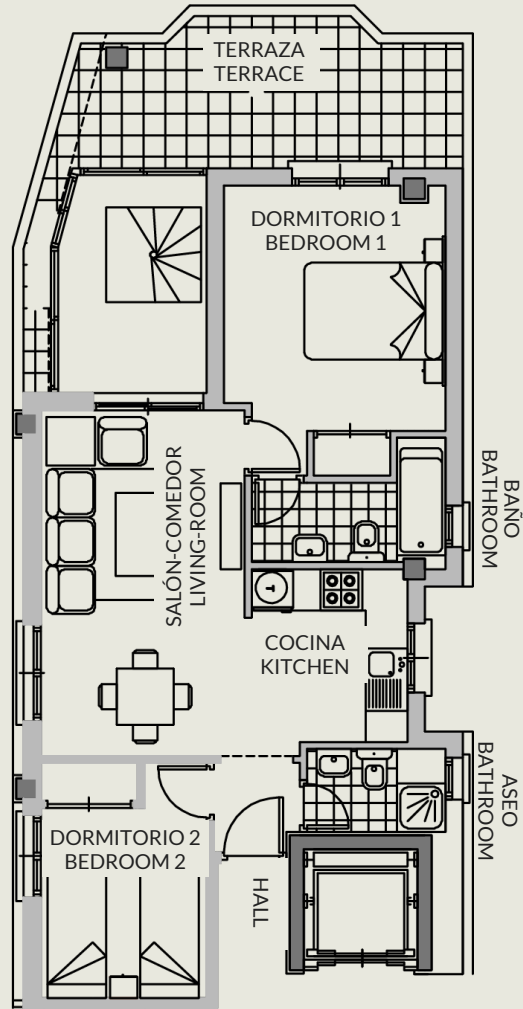
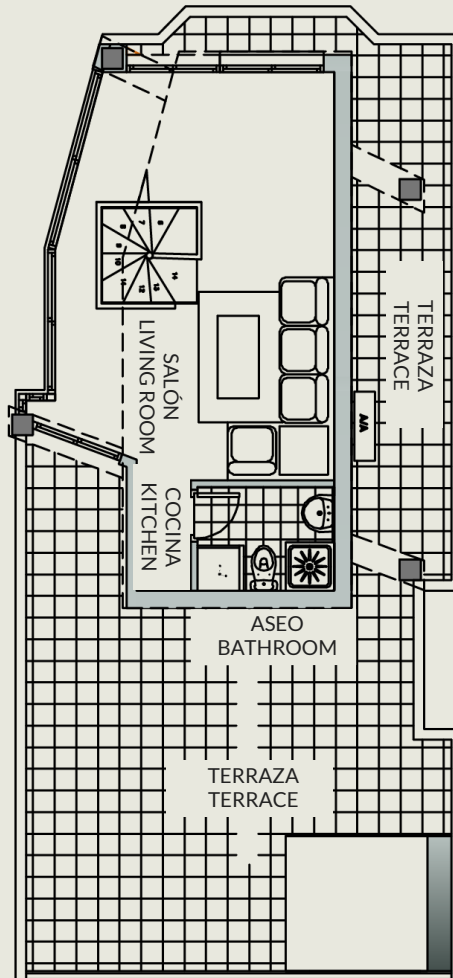


TOPACIO IV

ÁTICO DÚPLEX / DUPLEX PENTHOUSE
 2 DORMITORIOS / 2 BEDROOMS
 PLANTA 6ª / 6th FLOOR
 ESCALERA 5 / STAIR 5



PLANTA BAJA
LOW LEVEL



PLANTA ALTA
TOP FLOOR

SUPERFICIES / SURFACES

Planta baja / low level

Superficie construida Builted surface	59m2
Terraza cubierta Covered terrace	19,15m2
Terraza descubierta Outdoor terrace	2,60m2

Planta alta / Top floor

Superficie construida Builted surface	31,75m2
Terrazas descubierta Outdoor terrace	42,25m2

Total ático / Total Penthouse

Superficie construida Builted surface	90,75m2
Terraza cubierta Covered Terrace	19,15m2
Terraza descubierta Outdoor Terrace	44,85m2
Elementos comunes Communal areas	10,34m2
Superficie total Total area	165,09m2

