



JADE

own your
dreams

by GRUPOESMERALDA

JADE

by GRUPOESMERALDA

JADE



- 01 Surrounding area
- 02 Location
- 03 JADE
- 04 Exterior and communal areas
- 05 Interiors and general finishes
- 06 Customisation
- 07 Layouts and plans
- 08 Energy efficiency
- 09 Grupo Esmeralda
- 10 Payment methods

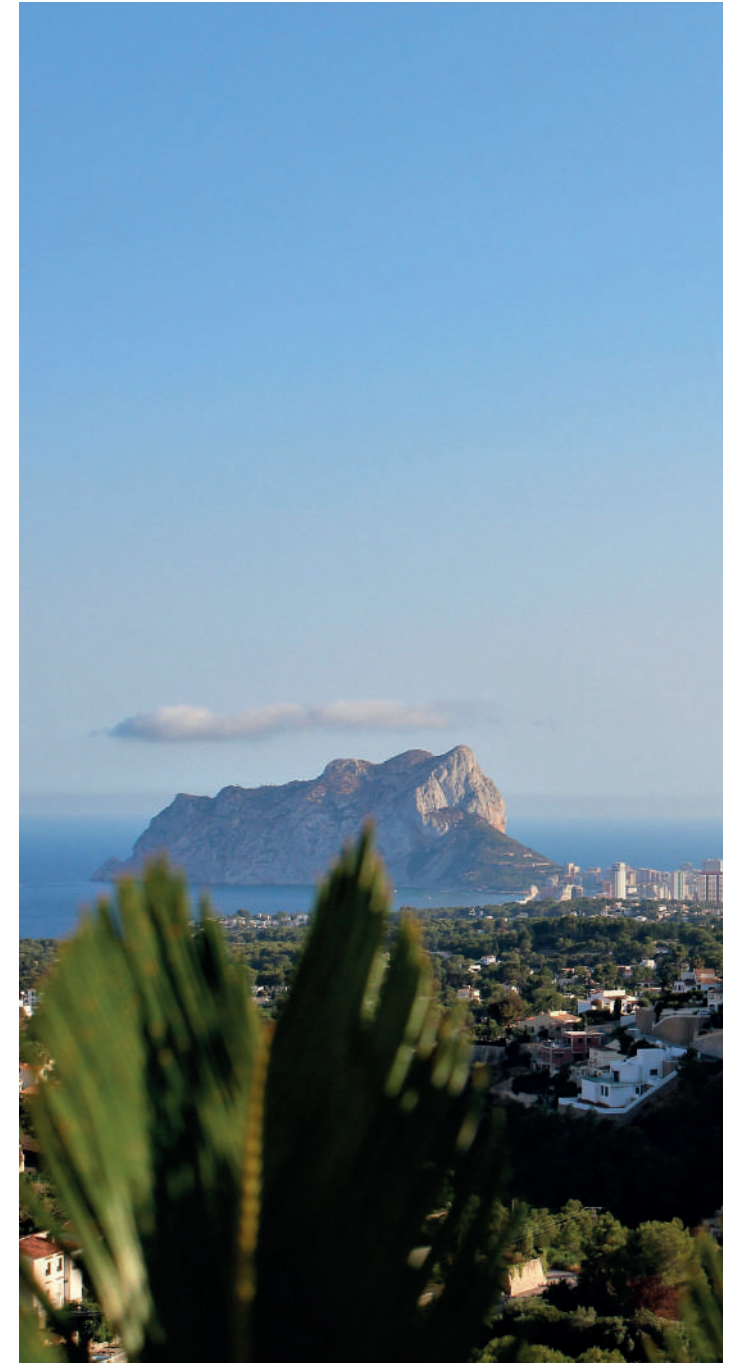
THE SURROUNDING AREA

Calpe

Can you imagine being able to enjoy the Mediterranean breeze, fine sand, and crystal-clear waters as soon as you open the door? At JADE, we are less about dreaming and more about making them come true. Making them a reality. And Calpe is the best place to start doing it. Not only because its beaches are certified with the "Q" for Quality and the Blue Flag, but also because of its excellent microclimate, its flora, its fauna, and its incredible location where water sports and activities are already part of the landscape. Escaping to nature from time to time is not the same as being able to live in its midst, surrounded by natural parks and up close with migratory birds such as flamingos, coots, Audouin's gulls, storks... and this is only the beginning of what you can discover in the Natural Park of Las Salinas.

Yes, falling in love every day is possible when you are able to admire the views and landscapes of Calpe. Panoramic views that you can enjoy from the highest point of the Peñón de Ifach, where your eyes can take in the Serra Gelada Natural Park, the protected landscape of Puig Campana and the Sierra de Aitana; the Morro de Toix linked by the Mascarat to the Sierra de Bernia and the Sierra de Oltà; Pedramala, the Montgó Natural Park, the Puig de la Llorença, the Cape of Moraira and on the clearest days even the island of Ibiza.

Where do we start?







LOCATION

All services

Stop dreaming. Because just 200 metres from JADE you will find the golden sand of the Arenal beach, a small step away from the fishing port at the foot of El Peñón, very close to the town centre and Las Salinas.

A genuine piece of the Mediterranean at your fingertips. You also have at your disposal all kinds of shops, medical services, and a wide range of leisure and restaurant facilities. Here, the most difficult thing is deciding which dream to make real.

JADE

Double-height terraces, natural light, fantastic views...
It's no fantasy, it's JADE. A rebirth of architectural lines,
carefully designed, with a Mediterranean feel and set in
an incomparable environment.

A true paradise halfway between nature and the city.









THE COMMON AREAS

Spaces where you can share your dreams

Spaces where you can share your dream:

1. Beach pool
2. Kid's pool
3. Children's play area
4. Lounger areas
5. Bicycle parking
6. Padel tennis courts
7. Common rooms
8. WC







THE HOMES

Welcome to the life you dreamed of

The tranquillity of a present where your home is close to the coast. Or of a future far from the coast, but living in its tranquillity.

You choose.

Because JADE apartments are conceived to encompass an entire dream through their careful, comfortable, and flexible design, in case you feel like walking through the door. Their two towers of bright apartments with two and three bedrooms exist solely for you.



GENERAL FINISHES

JADE has top quality porcelain floors.
Top quality exterior carpentry with thermal bridge break to achieve the best comfort and energy efficiency. Automated control of blinds and air conditioning.

Can you think of anything else?

Perfect. Tell us your ideas. We'll try to make them a reality.
Customisation options available on request.





KITCHEN

JADE, the ingredient you need to make your dream come true

All our different types of homes include large kitchens which open to the living room. They have high and low furniture fronts, with self-braking system. Oven column and integrated electrical appliances (fridge, oven, microwave, induction hob and extractor hood), worktop and kitchen front in the same material.

Customisation options available.

BATHROOM

**JADE, a piece of paradise
in every corner**

Our bathrooms feature top quality porcelain tiles. Vitrified porcelain wall-hung sanitary ware.

Also, large-format white resin showers that include a shower screen.





A collection of material samples including stone tiles, a geode, a wooden board with a ceramic knob, a metal plate, and color swatches.

CUSTOMISATION AND IMPROVEMENTS

At Jade, you will find the home you were dreaming of. Each room has been designed in detail to allow you enjoy the sun, the sea and luxury finishes.

Grupo Esmeralda also provides the option of making it even more special: thanks to our team, you'll be able to customise your home with the best qualities and materials.

CUSTOMISATION AND IMPROVEMENTS



Kitchen worktops
and fronts



Different flooring
options



Customisation of
wall colours



Different options
for bathroom
cladding



Airzone air
conditioning system
improvements*

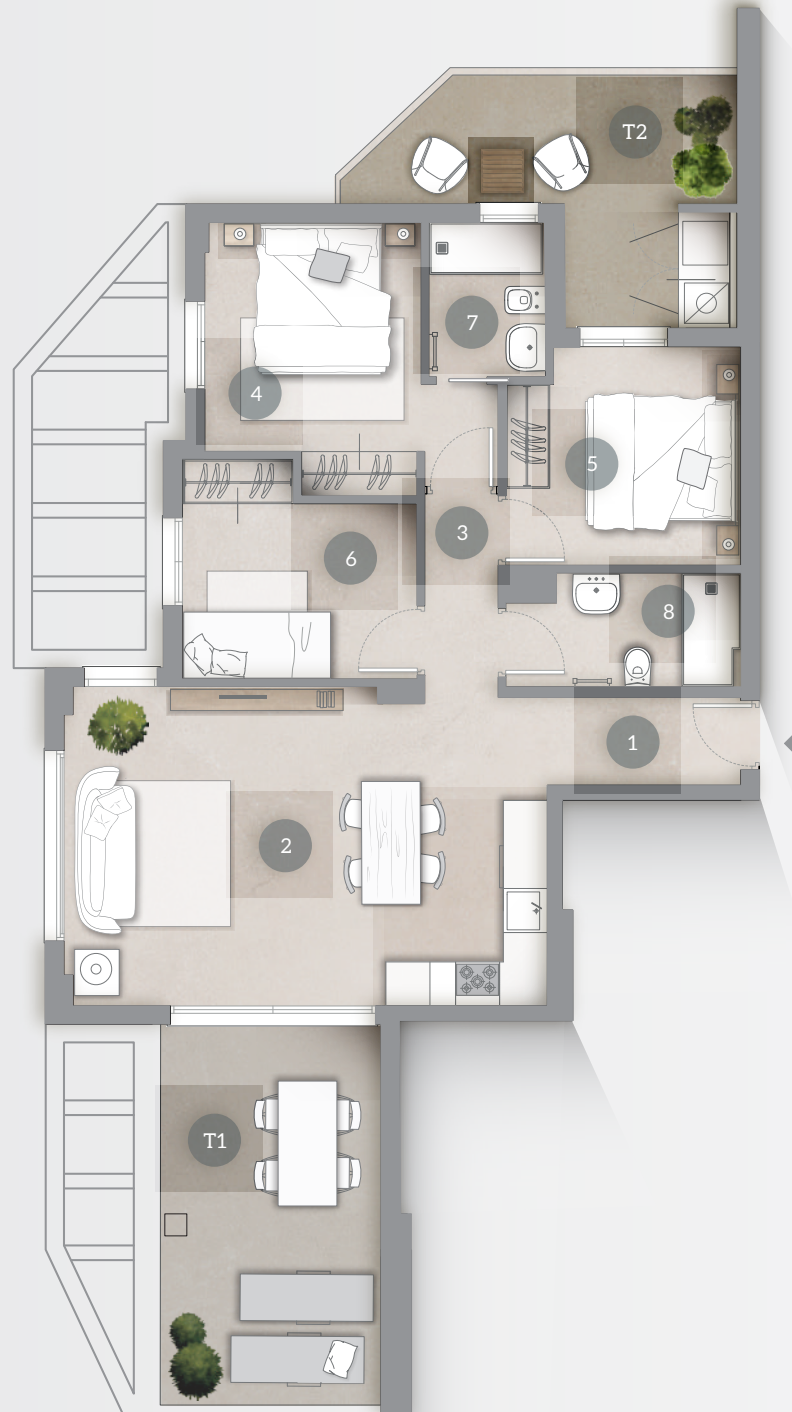


Improvement
on basic home
automation pack*

* Improvements at customer's request to be budgeted for

TYPE A APT.

3 bedrooms



1. ENTRANCE	s.u. 3,15 m2
2. LIVING/DINING ROOM-KITCHEN	s.u. 28,15 m2
3. HALLWAY	s.u. 2,75m2
4. BEDROOM 01	s.u. 11,60 m2
5. BEDROOM 02	s.u. 9,20 m2
6. BEDROOM 03	s.u. 8,60 m2
7. BATHROOM 01	s.u. 3,35 m2
8. BATHROOM 02	s.u. 4,65 m2

Total indoor floor area 71,45 m2

TERRACE 1 s.u. 16,60 m2

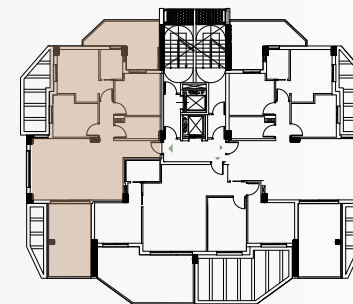
TERRACE 2 s.u. 13,05 m2

Total terrace floor area 29,65 m2

Constructed area apt. s.u. 83,10 m2

Terrace area s.u. 29,65 m2

TOTAL BUILT 112,75 m2



ESCALA



TYPE B APT.

3 bedrooms



1. LIVING-DINING ROOM-KITCHEN	s.u. 29,40 m2
2. BEDROOM 01	s.u. 10,90 m2
3. BEDROOM 02	s.u. 10,90m2
4. BEDROOM 03	s.u. 10,50 m2
5. HALLWAY	s.u. 1,30 m2
6. BATHROOM 01	s.u. 3,65 m2
7. BATHROOM 02	s.u. 3,50 m2

Total indoor floor area **70,15 m2**

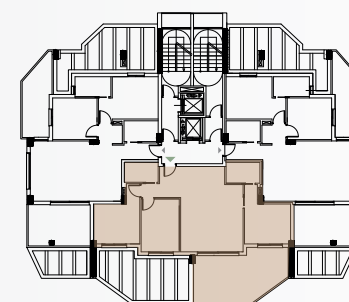
TERRACE s.u. 23,70 m2

Total terrace floor area **23,70 m2**

Constructed area apt. s.u. 80,25 m2

Terrace area s.u. 23,70 m2

TOTAL BUILT 103,95 m2



ESCALA



TYPE C APT.

2 bedrooms



1. ENTRANCE	s.u. 3,10 m ²
2. LIVING-DINING ROOM-KITCHEN	s.u. 27,90 m ²
3. HALLWAY	s.u. 2,40m ²
4. BEDROOM 01	s.u. 11,85 m ²
5. BEDROOM 02	s.u. 9,60 m ²
6. BATHROOM 01	s.u. 3,70 m ²
7. BATHROOM 02	s.u. 3,60 m ²

Total indoor floor area 62,15 m²

TERRACE 1 s.u. 14,10 m²

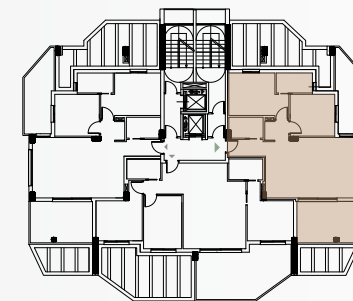
TERRACE 2 s.u. 11,75 m²

Total terrace floor area 25,85 m²

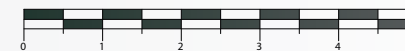
Constructed area apt. s.u. 72,35 m²

Terrace area s.u. 25,85 m²

TOTAL BUILT 98,20 m²



ESCALA



PENTHOUSE A

3 bedrooms



1. LIVING-DINING ROOM-KITCHEN	s.u. 45,25 m ²
2. HALLWAY	s.u. 3,75 m ²
3. BEDROOM 01	s.u. 11,60 m ²
4. BEDROOM 02	s.u. 9,20 m ²
5. BEDROOM 03	s.u. 8,60 m ²
6. BATHROOM 01	s.u. 3,35 m ²
7. BATHROOM 02	s.u. 4,00 m ²

Total indoor floor area **85,75 m²**

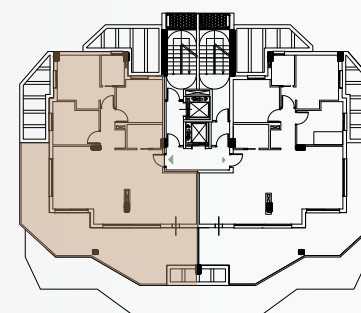
TERRACE s.u. 45,60 m²

Total terrace floor area **45,60 m²**

Constructed area apt. s.u. 98,40 m²

Terrace area s.u. 45,60 m²

TOTAL BUILT 144,00 m²



ESCALA





A BUILDING THAT TAKES CARE OF YOU

Find the right balance.

The breeze and the Mediterranean Sea will become part of your daily life, integrated into a careful architectural design where you will enjoy an environmental balance.



QUALITY

We work with the leading brands on the market



INNOVATION

DHW production system with aerothermal energy for an efficient home installation.



EFFICIENCY

Thermally and acoustically insulated enclosures and partitions for greater comfort.



GRUPOESMERALDA

^ Commitment and track record

Our extensive experience operating in Calpe places us among the most prestigious developers on the Costa Blanca. For this reason, our aim has always been and will continue to be to provide you with the best service: quality properties which feature everything you have always dreamed of.

A customised service to which we add the benefits of belonging to large hotel and rental groups, as we have a wide variety of properties strategically located to meet all kinds of needs.

Staff at Grupo Esmeralda have been working in the sector for more than 20 years so they can advise you, guide you and help you find the property you are looking for, assisting you throughout the purchase process.

For all these reasons, because we dream of giving you the best, we make your dreams come true.



**+40
YEARS**

of experience in
the real estate sector

More than
2800
homes

built in Calpe, making
the dreams of many
families come true

A
LEADER

and benchmark
company,
we manage the
whole process and
guarantee quality
and reliability





Payment methods

6.000€ + VAT

at the time of booking

First payment

on signature of the purchase agreement (consult %)

Remainder

on completion and handover of your home

Contact us and book an appointment
to view the new JADE
development in Calpe

+34 965 270 206
jade@grupoesmeralda.com

www.grupoesmeralda.com

JADE

own your
dreams

Contact

Sales Office in
Turmalina building
Avda. Juan Carlos I, nº 26
03710 Calpe (Alicante)

Sales Office in
Roca Esmeralda building
C/Ponent, nº1
03710 Calpe (Alicante)

Tel. +34 965 270 206
jade@gruposmeralda.com
www.jadecalpe.com

by **GRUPOESMERALDA**