



# Topacio IV

**Promotion:** Topacio IV

**Type:** 46A Duplex Penthouse

**Year of construction:** 2004

**Address:** C/ Llebeig, 1  
(03710) Calpe, Alicante

**Built surface :** 52,70m<sup>2</sup>

**Covered terrace:** 42,70m<sup>2</sup>

**Outdoor terrace:** 61,90m<sup>2</sup>

**Common zones:** 11,06m<sup>2</sup>

**Total area:** 168,36m<sup>2</sup>

**Nº of bedrooms:** 3

**Nº of bathrooms:** 3

**Equipped bathrooms:** ✓

**Kitchen:** American

**Equipped Kitchen:** ✓

**Furnished:** ✓

**Air conditioning F/C:** ✓

**Pools children / adults:** ✓

**Gated property:** ✓

**Intercom:** ✓

**Terraces:** 2

**Parkings &/or garages:** Available



## TOPACIO IV

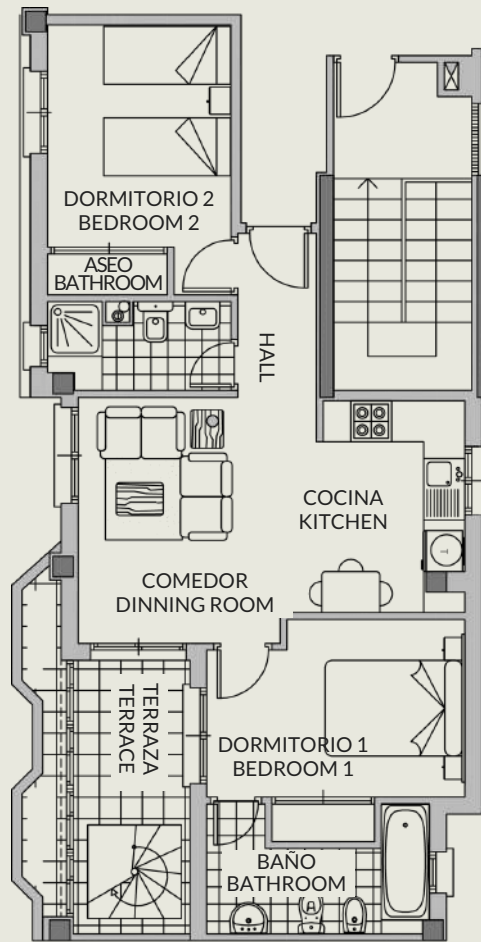
### ÁTICO DÚPLEX / DUPLEX PENTHOUSE

3 DORMITORIOS / 3 BEDROOMS

PLANTA 6ª / 6th FLOOR

ESCALERA 4 / STAIR 4

46A



PLANTA BAJA  
LOW LEVEL

#### SUPERFICIES / SURFACES

##### Planta baja / low level

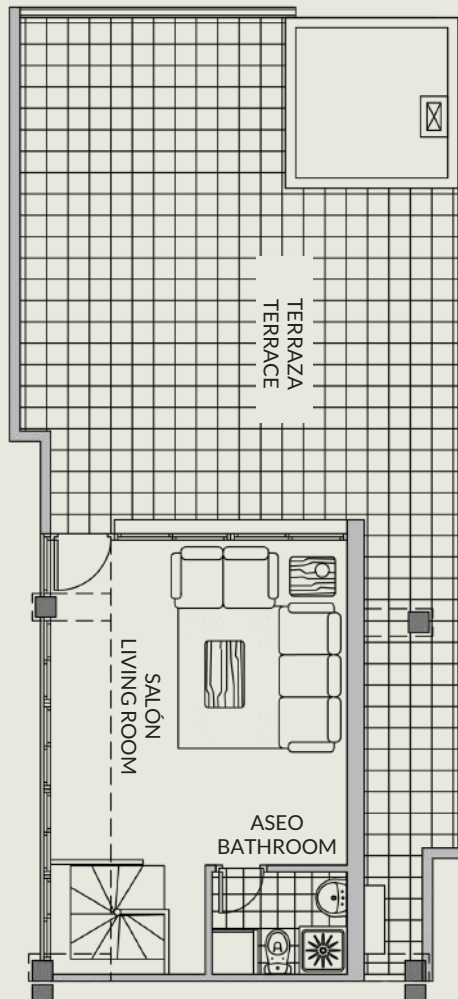
Superficie construida <i>Builded surface</i>	60,30m <sup>2</sup>
Terraza cubierta <i>Covered terrace</i>	7,75m <sup>2</sup>
Terraza descubierta <i>Outdoor terrace</i>	2,45m <sup>2</sup>

##### Planta alta / Top floor

Superficie construida <i>Builded surface</i>	27,25m <sup>2</sup>
Terrazas descubierta <i>Outdoor terrace</i>	61,65m <sup>2</sup>

##### Total ático / Total Penthouse

Superficie construida <i>Builded surface</i>	87,55m <sup>2</sup>
Terraza cubierta <i>Covered Terrace</i>	7,75m <sup>2</sup>
Terraza descubierta <i>Outdoor Terrace</i>	64,10m <sup>2</sup>
Elementos comunes <i>Communal areas</i>	11,06m <sup>2</sup>
Superficie total <i>Total area</i>	<b>170,46m<sup>2</sup></b>



PLANTA ALTA  
TOP FLOOR

