



# Topacio IV

**Promotion:** Topacio IV

**Type:** 36A Duplex Penthouse

**Year of construction:** 2004

**Address:** C/ Llebeig, 1  
(03710) Calpe, Alicante

**Built surface :** 52,80m<sup>2</sup>

**Covered terrace:** 42,70m<sup>2</sup>

**Outdoor terrace:** 61,60m<sup>2</sup>

**Common zones:** 11,08m<sup>2</sup>

**Total area:** 168,18m<sup>2</sup>

**Nº of bedrooms:** 3

**Nº of bathrooms:** 3

**Equipped bathrooms:** ✓

**Kitchen:** American

**Equipped Kitchen:** ✓

**Furnished:** ✓

**Air conditioning F/C:** ✓

**Pools children / adults:** ✓

**Gated property:** ✓

**Intercom:** ✓

**Terraces:** 2

**Parkings &/or garages:** Available



## TOPACIO IV

### ÁTICO DÚPLEX / DUPLEX PENTHOUSE

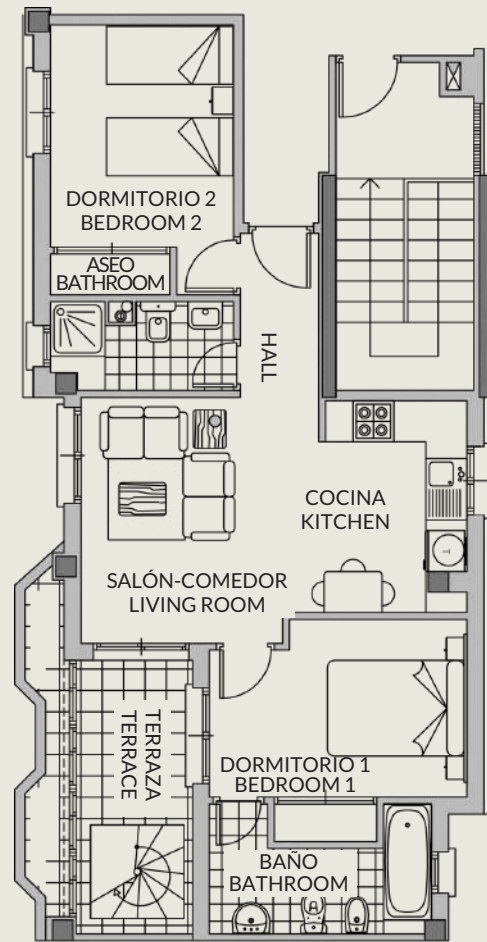
3 DORMITORIOS / 3 BEDROOMS

PLANTA 6ª / 6th FLOOR

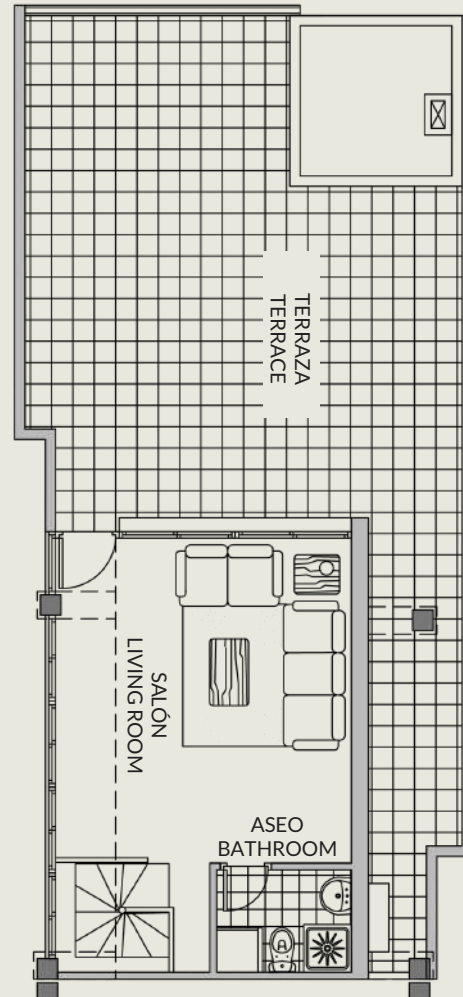
ESCALERA 3 / STAIR 3

36A

PLANTA BAJA  
LOW LEVEL



PLANTA ALTA  
TOP FLOOR



#### SUPERFICIES / SURFACES

##### Planta baja / low level

Superficie construida <i>Builded surface</i>	60,45m <sup>2</sup>
Terraza cubierta <i>Covered terrace</i>	7,70m <sup>2</sup>
Terraza descubierta <i>Outdoor terrace</i>	3,40m <sup>2</sup>

##### Planta alta / Top floor

Superficie construida <i>Builded surface</i>	26,75m <sup>2</sup>
Terrazas descubierta <i>Outdoor terrace</i>	55,95m <sup>2</sup>

##### Total ático / Total Penthouse

Superficie construida <i>Builded surface</i>	87,20m <sup>2</sup>
Terraza cubierta <i>Covered Terrace</i>	7,70m <sup>2</sup>
Terraza descubierta <i>Outdoor Terrace</i>	59,35m <sup>2</sup>
Elementos comunes <i>Communal areas</i>	11,08m <sup>2</sup>
Superficie total <i>Total area</i>	<b>165,33m<sup>2</sup></b>

